

Multipurpose LS150

The LS150 is the latest addition to our baler range. LS150 is a multi- role baler, designed to bale a multitude of different materials without any baler modifications. The same baler configuration can be used to bale plastic, cardboard, PET bottles (lid on), steel drums and plastic drums. Tyres can be baled using specified strapping. An optional removable bin enables LS150 to crush waste material that can't be baled such as glass and small electrical appliances (following all required material safe handling practices). Bales can be tied off at any height. This facilitates effective use of the baler where one site has small quantities of many waste streams.



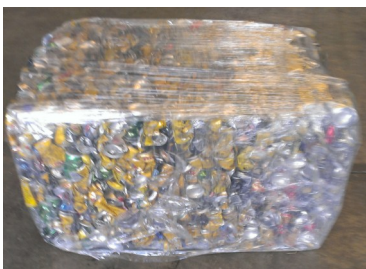
90 Plastic Drums



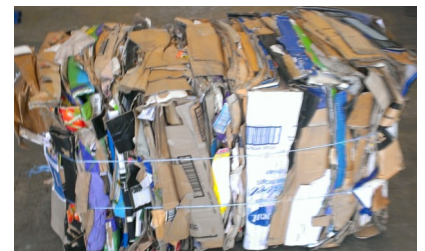
122 kg of Plastic



Metal Drums



41 kg of Cans



134 kg of Cardboard



210kg of Crushed Glass



34 Car Tyres

Ti Sales Team - Ken & Trudy



Specifications:

Unit weight	900kg
Power	4kw 3phase
Electrical	20amp 4pin
	Clipsal compatible
Height	3100mm
Width	1000mm
Depth	1250mm
Compaction force	14000kg

Trethewey Industries Pty Ltd

ABN 84 072 739 827

14 Carl Baer Circuit

DEEPWATER NSW 2371

Ph (02) 6734 5403

Fax (02) 6734 5433

FREECALL 1800 888 403

Email sales@autobaler.com.au

Web Site www.autobaler.com.au